

ITEM CODE: 01906

VERY IMPORTANT

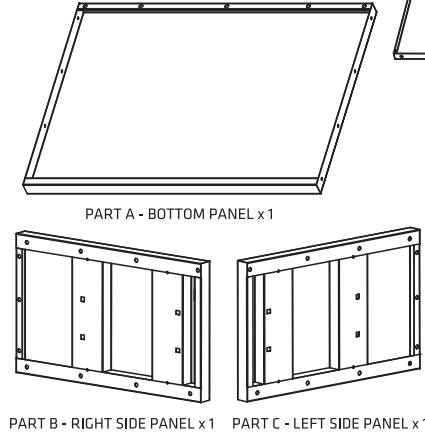
Please read the instructions completely before commencing assembly. Unpack the unit and verify that you have all parts listed below. Assemble the unit on a solid, level surface.

SAFETY TIP

When assembling or installing this product wear protective gloves and eyewear

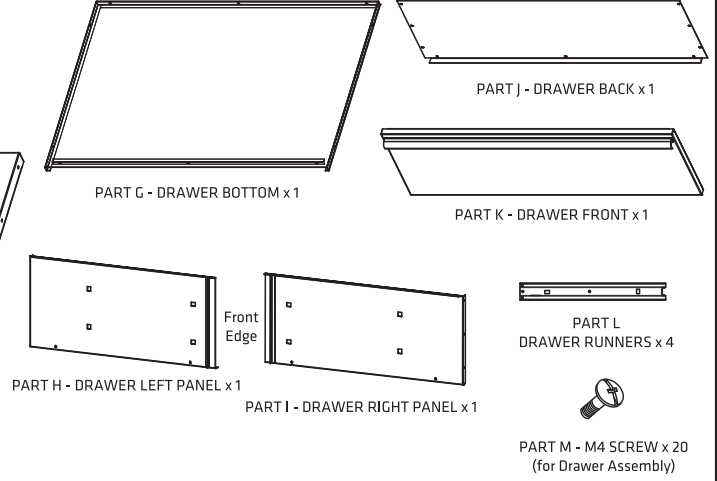
PARTS LIST

OUTER DRAWER HOUSING



Part F - M6 SCREW x 32

DRAWER PARTS

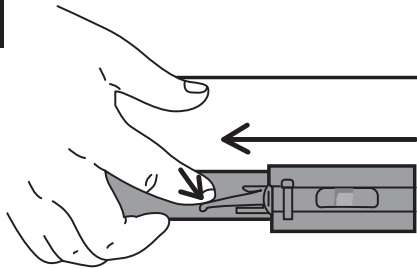


Part M - M4 SCREW x 20 (for Drawer Assembly)

PLEASE NOTE: If using an electric screwdriver only loosely tighten screws, finish tightening with hand screwdriver to avoid damage.



STEP 1



SEPARATE THE DRAWER SLIDE INTO 2 PARTS

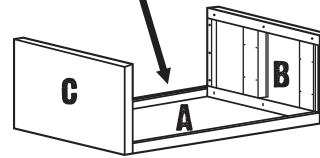
1. Gently pull the Drawer Slide (L) out to pull extension.
2. Depress Black Toggle and continue to pull the Inner Runner forward. You will feel the catch release and the 2 parts will separate.

STEP 2

Note: Use Part F-M6 Screws for Housing Screws



Screw holes at the back of Bottom Panel A



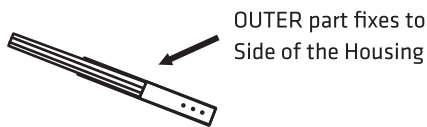
FIX THE SIDE PANELS TO BASE

Start with the Bottom Panel (A) and screw fix the Right Side Panel (B). Screw Fix the Left Side Panel (C).

STEP 3

PART L - Drawer Runner

Separate into the INNER and OUTER parts.



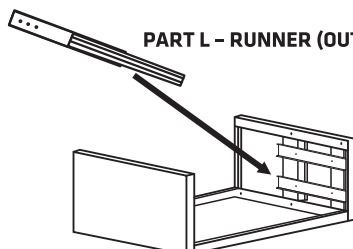
OUTER part fixes to Side of the Housing



INNER part fixes to the Drawer

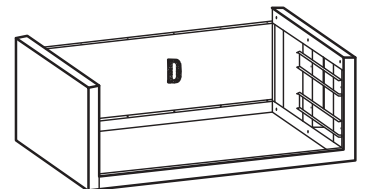
FIX THE OUTER DRAWER RUNNERS

PART L - RUNNER (OUTER)



Screw fix 2 x OUTER Runners onto the Right Side and 2 x OUTER Runners to the Left Side Panels. The Side Panels are set up to fix the Runners.

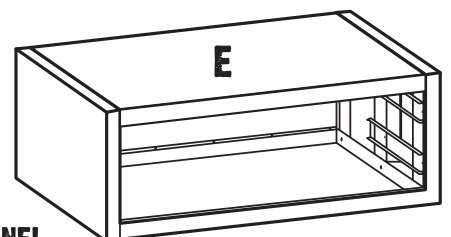
STEP 4



FIX THE BACK PANEL

Screw fix the Back Panel (D) onto the partially assembled unit.

STEP 5



FIX THE BACK PANEL

Screw Fix the Top Panel (E) onto the partially assembled unit.

ITEM CODE: 01906

VERY IMPORTANT

Please read the instructions completely before commencing assembly. Unpack the unit and verify that you have all parts listed below. Assemble the unit on a solid, level surface.

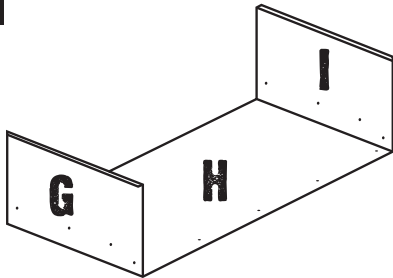
SAFETY TIP

When assembling or installing this product wear protective gloves and eyewear

THE OUTER HOUSING IS COMPLETE. NOW START ON THE DRAWER ASSEMBLY.

Note: Use Part F-M6 Screws for Housing Screws 

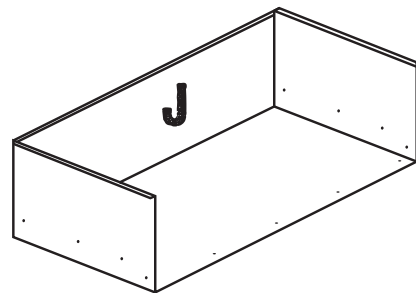
STEP 6



FIX THE DRAWER SIDE PANELS TO DRAWER BASE.

Fix the Left Side Panel (H) and the Right Side Panel (I).

STEP 7

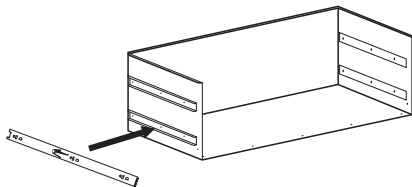


FIX THE DRAWER BACK PANEL

Screw the Back Panel (J) to the Drawer unit.

STEP 8

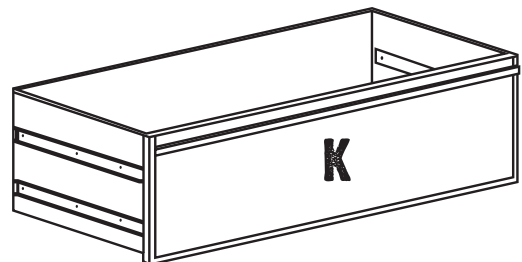
NOTE: CORRECT POSITIONING OF RUNNER



FIX THE RUNNER TO DRAWER

Screw fix 2 x Runner Inners to both sides of the Drawer unit.

STEP 9

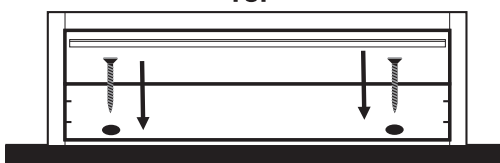


FIX THE DRAWER FRONT

Screw Fix the Drawer Front (K) to the Drawer unit.

STEP 10

TOP



RACK IT 15MM MDF SHELF

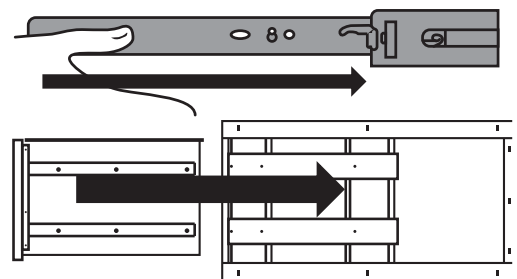
OPTIONAL:

SCREW FIX THE OUTER CABINET TO THE RACK IT MDF SHELF

Before fitting the Drawer, the Cabinet can be screw fixed onto your Rack It MDF shelf. The Cabinet has 2 x 5mm screw holes in the Bottom Panel.

NOTE: Screws are not supplied as individual circumstances may differ. Use a screw no longer than 15mm.

STEP 11



THE FINAL ASSEMBLY OF THE DRAWER AND THE HOUSING

You can now insert the drawer into the housing.

1. Carefully line up the inner and outer parts of all 4 Drawer Runners.
2. Once all Runners are touching, gently push the Drawer closed.
3. You may have to slightly open and then close the Drawer a few times until you feel all 4 Runners fully engage.